

PR-96E Gradient Thermal Cycler

Thermal Cycler

Introduction

Gradient PCR instrument is a gene amplification instrument with gradient PCR function derived from ordinary PCR instrument. It is widely used in molecular biology, criminal investigation, disease research and other fields.

Feature

1. New and unique appearance, the interface operation is simple and convenient, compact size.
2. The latest generation of semiconductor technology, excellent augmentation performance, effectively eliminate the edge effect of module heat conduction, the module temperature uniformity is excellent. Built-in multi-channel refrigeration film, several sensors are evenly distributed, the program temperature control is more precise.
3. 5-inch TFT high-definition full-touch color screen, can quickly edit the required files, visual display of temperature curve, convenient and fast setting, accurate display of temperature curve and instrument running process status in real time.
4. The system has a built-in gradient calculator, which can easily obtain accurate annealing temperature for different experimental samples to optimize PCR reaction conditions.
5. User login, rights management, password protection, data security, administrators can clear users, large data storage, the maximum number of files that can be stored in the machine is greater than 100.
6. The ingenious elastic hot cover structure design, ADAPTS to the different height test tube, guarantees the best conditions for the test.
7. Real-time display of gradient temperature distribution, real-time temperature display, more conducive to controlling the sample temperature.
8. The hot lid temperature and working mode can be set, hot lid can be switched on and off, and test tube temperature control mode and module temperature control mode can be choose to meet more different experimental requirements.



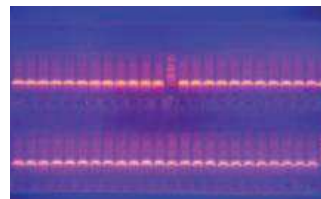
One-click open button



96-well large sample table



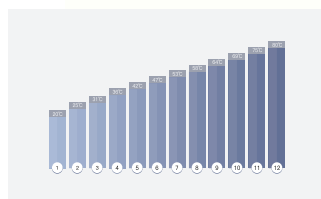
remove edge effect technique



Uniformity



5-inch display



Gradient Calculation



Interface display

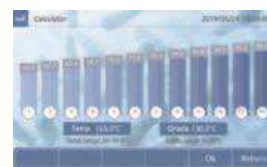
The 5-inch TFT high-definition full-touch color screen can quickly edit the required files, temperature curve visual display, the setting is convenient and fast, real-time accurate display temperature curve and instrument operation process status.



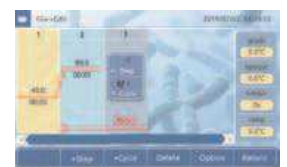
Main Interface



Running file



Gradient Calculation



Edit file



Set interface



Can be used with 96-well PCR plates

Parameter

Model	PR-96E	Hot cover temp. range	30~105°C
Single step time	1~59m59s(0 is forever)	Max. steps of the program	30
Temp. range	4~99.9°C(constant temp.: 4°C)	Program max. cycle nu	99
Sample capacity	96x0.2ml	Time increment/decrement	-599~+599s
Max. heating rate	4.5°C/s	Temp. increase/decrease	-9.9~+9.9°C
Max. cooling rate	4°C/s	Program pause function	Yes
Temp. uniformity	±0.25°C	16°C Insulation	Forever
Temp. accuracy	±0.20°C	LCD	5 inch, 800×480 Pixel
Temp. display resolution	0.1°C	Program storage quantity	> 100
Temp. control method	Block/Tube	Communication Interface	USB 2.0
Gradient temp. uniformity	±0.3°C	Input power	100~240V AC6.6~3.1A 50/60Hz
Gradient temp. accuracy	±0.3°C	Dimensions	W.185×D.280×H.160mm
Gradient temp. range	30~99.9°C	Net weight	4.3kgs
Gradient temp. difference range	0.1~30°C		